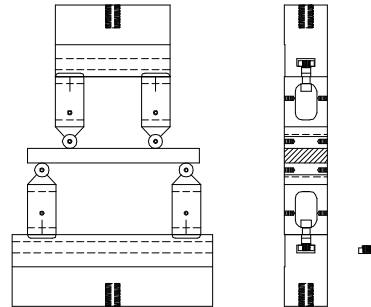
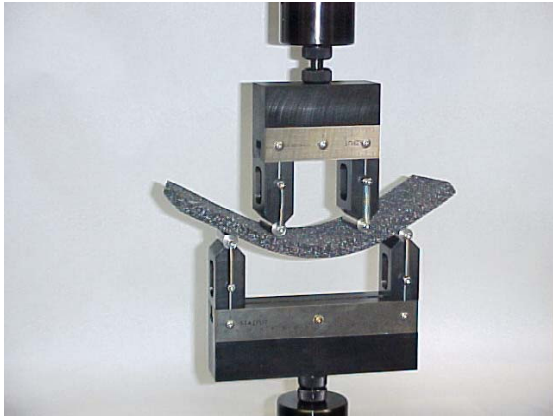


## SHORT BEAM SHEAR AND THREE POINT FLEXURE FIXTURE HIGH CAPACITY



Specimen	Width	Any width up to 1.5"
	Thickness	Any thickness up to 2.0"
	Length	Any length up to 6" span
Fixture	Support Spans	Any span from 0.125" to 6.0"
	Loading Radii	1/8"R (loading nose) 1/16"R (supports)
	Construction	High Strength Steel with Protective Finish
	Temperature	-120 to 250°F (-85 to 122°C)
	Mounting	12mm male clevis Top, 1/2" -20 threaded coupling Bottom
		5,000 lbs (22 kN)
	Capacity	19 lbs
	Weight	Assembled - 2" x 7" x 8"
	Dimensions	Manufactured in accordance with ASTM D2344
	Standard	

Model No. ASTM.D2344.17-Short Beam Shear And Three Point Flexure Fixture High Capacity

Main Span: Infinitely adjustable from 1.0" to 6.0" (25.4mm to 410mm)  
Four Point Span: Infinitely adjustable from 1.0" to 3.0" (25.4mm to 77mm)  
Three Point Loading Head: 0.50" (12.7mm) diameter roller  
Support Width: 1.50" (38mm)  
Rollers: 0.50" (12.7mm) diameter  
Roller width: 1.50"  
Maximum deflection at mid span: 1.75" (45mm)  
Adaption: M12-1.25 threaded coupling ends (studs and locking nuts)  
Overall Size: 2.0" deep by 7.0" wide by 9.0" tall  
Capacity: 7,000 lbf. (30 kN)  
Construction: high strength steel with protective black oxide coating  
Temperature Range: -120°F to 250°F (-85°C to 122°C)  
Fixture is manufactured in accordance with ASTM D2344.

# **MODEL NO. ASTM.D2344.17**

## **ASTM, COMPOSITE, SHEAR**

### **ACCESSORIES**

Model No. ACC.D2344.1701 - Extra Loading Nose - Please specify diameter.

Model No. ACC.D2344.1702 - Extra Set of (2) Supports - Please specify diameter.

Model No. ACC.D2344.1703 - Fixed Span 4 Point Loading Nose - Please specify diameter.

### **Upper and lower fixture attachment is supplied with 1/2" -20 female coupling (Common adapter sizes include:)**

Model No. M01S21 - 1/2" Male Clevis (Type B) to 1/2" -20 Threaded Stud

Model No. M02S21 - 5/8" Male Clevis (Type C) to 1/2" -20 Threaded Stud

Model No. M03S21 - 1.25" Male Clevis (Type D) to 1/2" -20 Threaded Stud

Model No. M12S21 - 12mm Male Clevis (Type O) to 1/2" -20 Threaded Stud

Model No. S36S21 - 1" -14 to 1/2" -20 Threaded Step Stud

Model No. LN21 - 1/2" -20 Threaded Locking Nut with Knurled OD

### **SPARE PARTS**

SPA.D2344.1701- Replacement Bearings

SPA.D2344.1702- Replacement Shaft

### **REFERENCE DOCUMENT AND TEST METHOD SCOPE:**

SCOPE: <http://www.astm.org/Standards/D2344.htm>

ASTMD2344/D2344M-13

Standard Test Method for Short-Beam Strength of Polymer Matrix Composite Materials and Their Laminates

1.1 This test method determines the short-beam strength of high-modulus fiber-reinforced composite materials. The specimen is a short beam machined from a curved or a flat laminate up to 6.00 mm [0.25 in.] thick. The beam is loaded in three-point bending.

1.2 Application of this test method is limited to continuous- or discontinuous-fiber-reinforced polymer matrix composites, for which the elastic properties are balanced and symmetric with respect to the longitudinal axis of the beam.

1.3 The values stated in either SI units or inch-pound units are to be regarded separately as standard. The values stated in each system may not be exact equivalents; therefore, each system must be used independently of the other. Combining values from the two systems may result in nonconformance with the standard.

1.4 This standard does not purport to address all of the safety concerns, if any, associated with its use. It is the responsibility of the user of this standard to establish appropriate safety and health practices and determine the applicability of regulatory limitations prior to use.

Extracted, with permission, from ASTM D2344 Standard Test Methods of Static Tests of Lumber in Structural Sizes, copyright ASTM International, 100 Barr Harbor Drive, West Conshohocken, PA 19482. A copy of the complete standard may be purchased from ASTM International, [www.astm.org](http://www.astm.org).

*Material Testing Technology*

420 Harvester Court - Wheeling, IL. 60090 – Ph: (847) 215-7448 Fax: (847) 215-7449 E-mail: [sales@mtusa.net](mailto:sales@mtusa.net)