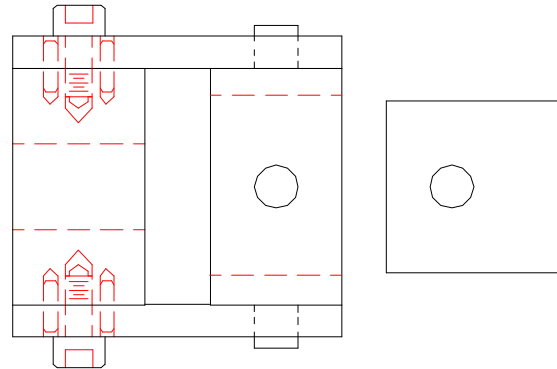
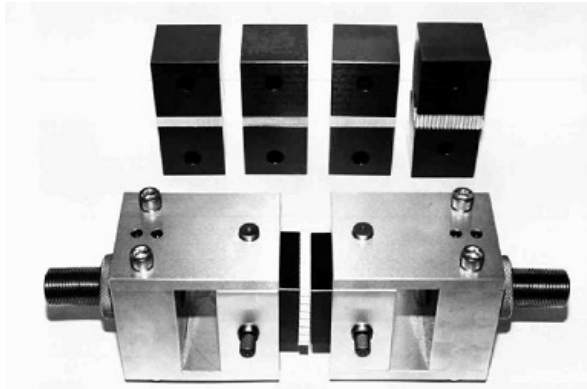


FLATWISE TENSION FIXTURE (SS) WITH 5 SETS OF 2" SQUARE (AL) BONDING BLOCKS - UNIVERSAL JOINT TYPE



Specimen:	Width	2"
	Length	2"
Fixture:	Construction	Stainless steel with aluminum bonding blocks
	Temperature	-120 to 250°F (-85 to 122°C)
	Mounting	1" -14 threaded couplings
	Capacity	20,000 lbs (88.9 kN)
	Weight	45 lbs approximately
	Dimensions	Assembled 4" x 4" x 10"
	Bonding	Supplied with 5 sets of aluminum bonding blocks
	Standard	Manufactured in accordance with ASTM C297 and D1623

Model No. ASTM.C0297.11 Flatwise Tension Fixture with Five Sets of 2" Square Bonding Blocks
Universal joint type fixture. Constructed from stainless steel except for the five sets of bonding blocks which are constructed from aluminum with a protective black anodizing coating. Fixture is constructed in accordance with ASTM C297 and D1623.

MODEL NO. ASTM.C0297.11

ASTM, FLATWISE, TENSION, TENSILE, ADHESIVE

ACCESSORIES

Model No. ACC.C0297.1102 - Set of (2) 2" square high strength steel with black oxide bonding blocks

Model No. ACC.C0297.1103 - Set of (2) 2" square stainless steel bonding blocks

Upper and lower fixture attachment is supplied with 1" -14 female coupling. (Common adapter sizes include:)

Model No. M03S36 - 1.25" Male Clevis (Type D) to 1" -14 Threaded Stud

Model No. S42S36 - 1.25" -12 to 1" -14 Threaded Step Stud

Model No. S48S36 - 1.5" -12 to 1" -14 Threaded Step Stud

Model No. S60S36 - 2" -12 to 1" -14 Threaded Step Stud

Model No. LN36 - 1" -14 Threaded Locking Nut with Knurled OD

SPARE PARTS

SPA.C0297.1101 - Extra swivel

Model No. SPA.C0297.1102 - Set of (2) 2" square aluminum bonding substrate blocks

REFERENCE DOCUMENT AND TEST METHOD SCOPE:

<http://www.astm.org/Standards/C297.htm>

ASTM C297/C297M-15

Standard Test Method for Flatwise Tensile Strength of Sandwich Constructions

1.1 This test method determines the flatwise tensile strength of the core, the core-to-facing bond, or the facing of an assembled sandwich panel. Permissible core material forms include those with continuous bonding surfaces (such as balsa wood and foams) as well as those with discontinuous bonding surfaces (such as honeycomb).

1.2 The values stated in either SI units or inch-pound units are to be regarded separately as standard. The values stated in each system are not exact equivalents; therefore, each system must be used independently of the other. Combining values from the two systems may result in nonconformance with the standard.

1.2.1 Within the text the inch-pound units are shown in brackets.

1.3 This standard does not purport to address all of the safety concerns, if any, associated with its use. It is the responsibility of the user of this standard to establish appropriate safety and health practices and determine the applicability of regulatory limitations prior to use.

Extracted, with permission, from ASTM C297 Standard Test Method for Flatwise Tensile Strength of Sandwich Constructions, copyright ASTM International, 100 Barr Harbor Drive, West Conshohocken, PA 19428. A copy of the complete standard may be purchased from ASTM International, www.astm.org.