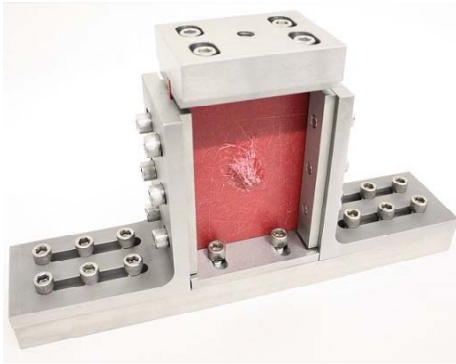


Standards:
AITM1-0010 - 05
ASTM D7137 - 17
BSS 7260 - 88
EN 6038-95
NASA 1092

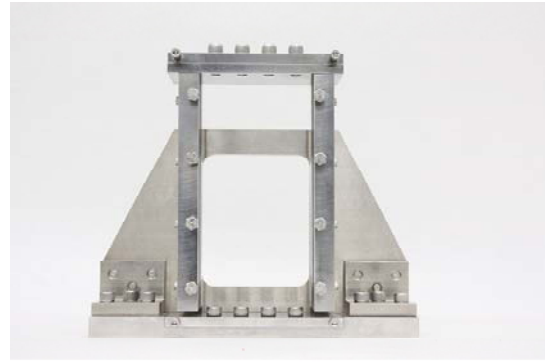
Material Type:
POLYMER, MATRIX, COMPOSITE

Type of Testing:
COMPRESSION

COMPRESSION AFTER IMPACT TEST FIXTURE



ASTM.D7137.10



NASA.01092.10

<u>Model No.</u>	<u>Specimen Size or Difference Between Fixtures</u>	<u>Construction</u>	<u>Temperature</u>
AITM.10010.20	4" wide, 6" long and 0.125-0.5" thick	Stainless steel	-240 to 600°F (-152 to 318°C)
ASTM.D7137.10	4" wide, 6" long and 0.125-0.5" thick	Stainless steel	-240 to 600°F (-152 to 318°C)
BOEI.07260.22	4" wide, 6" long and 0.125-0.5" thick	Stainless steel	-240 to 600°F (-152 to 318°C)
ENST.06038.20	4" wide, 6" long and 0.125-0.5" thick	Stainless steel	-240 to 600°F (-152 to 318°C)
ASTM.D8287.10	8.5" wide, 10" long and 0.125-0.5" thick	Stainless steel	-240 to 600°F (-152 to 318°C)
NASA.01092.10	5" wide, 10" long and 0.1"-0.5" thick	Stainless steel	-240 to 600°F (-152 to 318°C)

Fixture:	Mounting	Top: (D7137) 1/2"-13 coupling, (NASA) Platen Bottom: platen (not included)
	Capacity	50,000 lbs (222 kN)
	Weight	35 lbs
	Dimensions	14" x 3" x 7.8"
	Standard	Manufactured in compliance with AITM1-0010, ASTM D7137, D8287, BSS 7260, EN 6038 and NASA 1092

QUOTE

Model No. ASTM.D7137.10 - Compression After Impact Test Fixture

Accommodates specimens measuring 4" wide by 6" tall and from 0.125-0.5" thick. Supplied with 1/2"-13 threaded coupling for upper attachment to your test machine. Base of fixture sits on a compression platen (platen not included). Temperature range is -240 to 600°F (-152 to 318°C) and the fixture has a capacity of 50,000 lbs. Constructed from stainless steel and manufactured in compliance with AITM1-0010, ASTM D7137, BSS 7260 and EN 6038.

Model No. ASTM.D8287.10 - Compression After Impact Test Fixture

Accommodates specimens measuring 8.5" wide by 10" tall and from 0.125-0.5" thick. The fixture is used with platens (platen not included). Base of fixture sits on a compression platen (platen not included). Temperature range is -240 to 600°F (-152 to 318°C) and the fixture has a capacity of 50,000 lbs. Constructed from stainless steel and manufactured in compliance with ASTM 8287.

Model No. NASA.01092.10 - Compression After Impact and Open Hole Compression Test Fixture

Accommodates specimens measuring 5" wide by 10" tall and from 0.100" to 0.500" thick. By removing the back plate you can switch the fixture from compression after impact to an open hole compression fixture. The fixture is used with platens (platen not included). Constructed from stainless steel and manufactured in compliance with NASA 1092 publication.

ACCESSORIES

Model No. ACC.D7137.1001 - Optional Gussets Welded on to ASTM.D7137.10

SPARE PARTS

Please contact us for spare or replacement parts

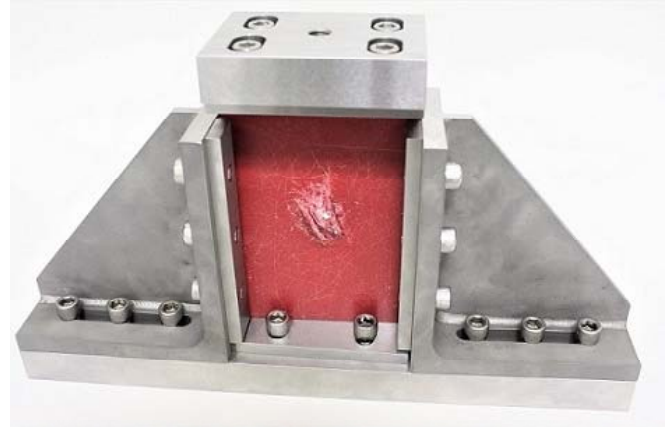
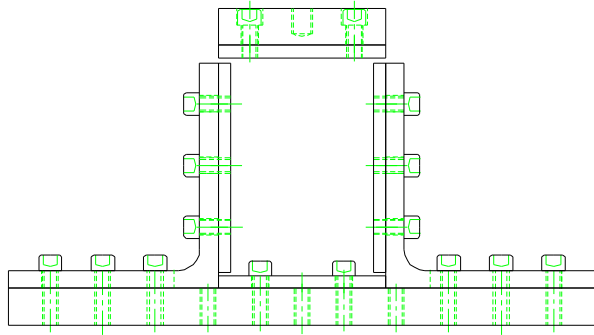
COMMON SIZE ADAPTERS

Upper and Lower Mounting: Platens

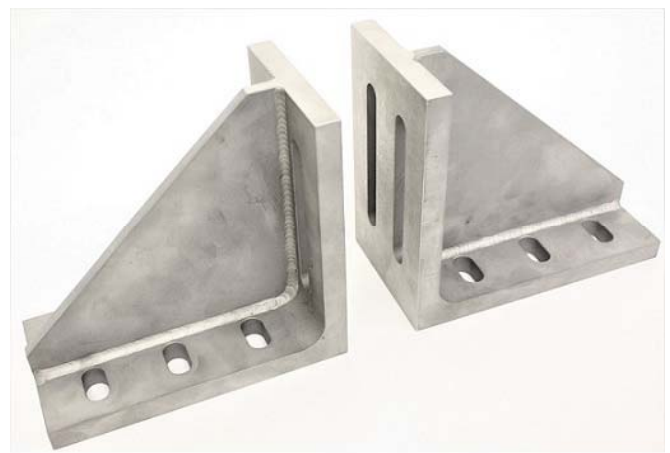
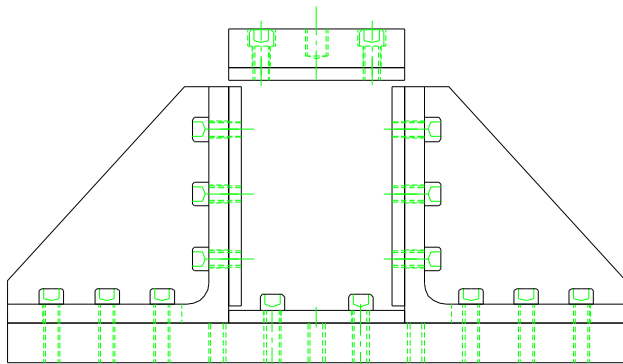
Model No. PLAT.RF061.10 - 6" Diameter Fixed Compression Platen

Model No. PLAT.SF061.10 - 6" Square Fixed Compression Platen

EXTRA PHOTOS:



ASTM.D7137.10 with Gussets



ACC.D7137.1001 - Optional Gussets