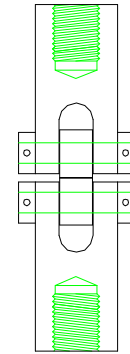
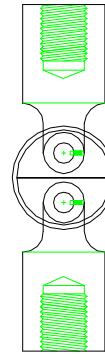


SPLIT DISK FIXTURE FOR PIPE



Model No.	Specimen Size or Difference Between Fixtures	Construction	Temperature
ASTM.D2290.10	Up to 1" wide, diameter from 1" - 4"	High strength steel and AL	-20 to 120°F (-29 to 49°C)
ASTM.D2290.20	Up to 2" wide, diameter from 4" and up	High strength steel and AL	-20 to 120°F (-29 to 49°C)
ASTM.D2290.50	Up to 2" wide, diameter from 12" and up	Stainless steel	-240 to 600°F (-152 to 318°C)
ASTM.D2290.51	Up to 2" wide, diameter from 4" - 18"	Stainless steel	-240 to 600°F (-152 to 318°C)
ASTM.D2290.52	Up to 2" wide, diameter from 12" and up	Stainless steel	-240 to 600°F (-152 to 318°C)

Fixture:	Mounting	(.10) 1/2"-20, (.20) 1"-14, (.50) 1.5"-12, (.51) 1.5"-12, (.52) 2"-12 couplings
	Capacity	(.10) 5,000 lbs, (.20) 20,000 lbs, (.50) 30,000 lbs, (.51) 60,000 lbs, (.52) 100,000 lbs
	Weight	14 lbs approximately
	Dimensions	Assembled 1" x 6" x 20"
	Standard	Manufactured in compliance with ASTM D2290

QUOTE

Model No. ASTM.D2290.10 - Split Disk Fixture For Up to 1" Wide Dees 5,000 Capacity

The fixture is supplied with **XX"** wide aluminum loading dee set for a pipe internal diameter of **XX"**. The fixture comes with 1/2"-20 couplings for mounting purposes and has a load capacity of 5,000 lbs. The fixture weighs an estimated 5 lbs and has the overall dimension (excluding the loading dees) 16" x 1.5" x 1.5". Manufactured from high strength steel in compliance with ASTM D2290.

Model No. ASTM.D2290.20 - Split Disk Fixture For Up to 2" Wide Dees 20,000 lbs Capacity

The fixture is supplied with **XX"** wide aluminum loading dee set for a pipe internal diameter of **XX"**. The fixture comes with 1"-14 couplings for mounting purposes and can handle a load capacity of 20,000 lbs. The fixture weighs an estimated 10 lbs and has the overall dimension (excluding the loading dees) 12" x 2" x 3". Manufactured from high strength steel in compliance with ASTM D2290.

Model No. ASTM.D2290.50 - Split Disk Fixture For Up to 2" Wide Dees 30,000 lbs Capacity

The fixture will accept loading dee sets from 4" to 12" with a load capacity of 30,000 pounds. The fixture will be supplied with two 1.5"-12 threaded couplings and can handle a load capacity of 30,000 lbs. Loading dees sold separately. Constructed from high strength stainless steel. Manufactured in compliance with ASTM D2290.

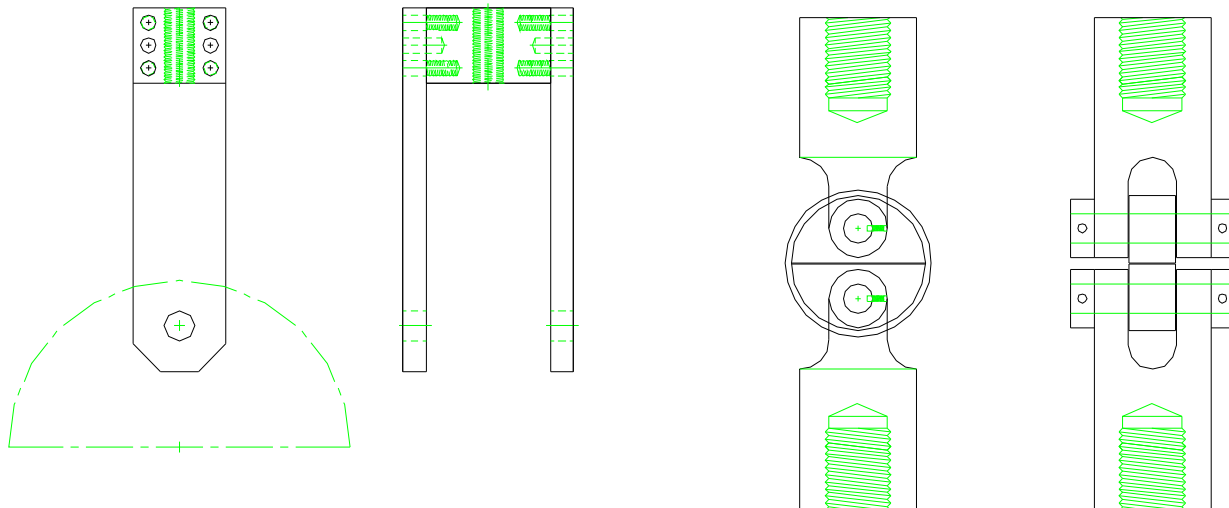
Model No. ASTM.D2290.51 - Split Disk Fixture For Up to 2" Wide Dees 60,000 lbs Capacity

The fixture will accept loading dee sets from 4" to 12" with a load capacity of 60,000 pounds. The fixture will be supplied with two 1.5"-12 threaded couplings. Loading dees sold separately. Constructed from high strength stainless steel. Manufactured in compliance with ASTM D2290.

Model No. ASTM.D2290.52 - Split Disk Fixture For Up to 2" Wide Dees 100,000 lbs Capacity

The fixture will accept loading dee sets from 12" and up with a load capacity of 100,000 pounds. The fixture will be supplied with two 2"-12 threaded couplings. Loading dees sold separately. Constructed from high strength stainless steel. Manufactured in compliance with ASTM D2290

EXTRA PHOTOS:



ACCESSORIES

Model No. ACC.D2290.2X01 - Additional Set of 3/4" Wide Aluminum Loading Dees, 1" ID
Model No. ACC.D2290.2X02 - Additional Set of 3/4" Wide Aluminum Loading Dees, 2" ID
Model No. ACC.D2290.2X03 - Additional Set of 3/4" Wide Aluminum Loading Dees, 3" ID
Model No. ACC.D2290.2X04 - Additional Set of 3/4" Wide Aluminum Loading Dees, 4" ID
Model No. ACC.D2290.2X05 - Additional Set of 3/4" Wide Aluminum Loading Dees, 5" ID

Model No. ACC.D2290.3001 - Additional Set of 1.25" Wide Aluminum Loading Dees, 1" ID
Model No. ACC.D2290.3002 - Additional Set of 1.25" Wide Aluminum Loading Dees, 2" ID
Model No. ACC.D2290.3003 - Additional Set of 1.25" Wide Aluminum Loading Dees, 3" ID
Model No. ACC.D2290.3004 - Additional Set of 1.25" Wide Aluminum Loading Dees, 4" ID

Model No. ACC.D2290.4004 - Additional Set of 2" Wide Aluminum Loading Dees, 4.5" ID
Model No. ACC.D2290.4006 - Additional Set of 2" Wide Aluminum Loading Dees, 6" ID
Model No. ACC.D2290.4008 - Additional Set of 2" Wide Aluminum Loading Dees, 8" ID
Model No. ACC.D2290.4010 - Additional Set of 2" Wide Aluminum Loading Dees, 10" ID
Model No. ACC.D2290.4012 - Additional Set of 2" Wide Aluminum Loading Dees, 12" ID

Model No. ACC.D2290.5004 - Additional Set of Stainless Loading Dees, 4" ID
Model No. ACC.D2290.5006 - Additional Set of Stainless Loading Dees, 6" ID
Model No. ACC.D2290.5008 - Additional Set of Stainless Loading Dees, 8" ID
Model No. ACC.D2290.5010 - Additional Set of Stainless Loading Dees, 10" ID
Model No. ACC.D2290.5012 - Additional Set of Stainless Loading Dees, 12" ID

Model No. ACC.D2290.5104 - Additional Set of Stainless Loading Dees, 4" ID
Model No. ACC.D2290.5106 - Additional Set of Stainless Loading Dees, 6" ID
Model No. ACC.D2290.5108 - Additional Set of Stainless Loading Dees, 8" ID
Model No. ACC.D2290.5110 - Additional Set of Stainless Loading Dees, 10" ID
Model No. ACC.D2290.5112 - Additional Set of Stainless Loading Dees, 12" ID
Model No. ACC.D2290.5114 - Additional Set of Stainless Loading Dees, 14" ID
Model No. ACC.D2290.5116 - Additional Set of Stainless Loading Dees, 16" ID
Model No. ACC.D2290.5118 - Additional Set of Stainless Loading Dees, 18" ID

Model No. ACC.D2290.5208 - Additional Set of Stainless Loading Dees, 8" ID
Model No. ACC.D2290.5210 - Additional Set of Stainless Loading Dees, 10" ID
Model No. ACC.D2290.5212 - Additional Set of Stainless Loading Dees, 12" ID
Model No. ACC.D2290.5214 - Additional Set of Stainless Loading Dees, 14" ID
Model No. ACC.D2290.5216 - Additional Set of Stainless Loading Dees, 16" ID
Model No. ACC.D2290.5218 - Additional Set of Stainless Loading Dees, 18" ID

SPARE PARTS

No spare parts available for this fixture

COMMON SIZE ADAPTERS

Upper and Lower Mounting: 1.5"-12 Female Coupling

Model No. M03S48 - 1.25" Male Clevis to 1.5" -12 Threaded Stud

Model No. S48S42 - 1.5" -12 to 1.25" -12 Threaded Step Stud

Model No. S151206 - 1.5" -12 x 6" Fatigue Rated Stud

Model No. S60S48 - 2" -12 to 1.5" -12 Threaded Step Stud

Model No. LN48 - 1.5" -12 Threaded Locking Nut with Knurled OD

Upper and Lower Mounting: 2"-12 Female Coupling

Model No. M03S60 - 1.25" Male Clevis to 2" -12 Threaded Stud

Model No. S60S42 - 2" -12 to 1.25" -12 Threaded Step Stud

Model No. S201206 - 2" -12 x 6" Fatigue Rated Stud

Model No. S60S48 - 2" -12 to 1.5" -12 Threaded Step Stud

Model No. LN60 - 2" -12 Threaded Locking Nut with Knurled O

EXTRA PHOTOS:



Material Testing Technology

420 Harvester Court - Wheeling, IL. 60090 - Ph: (847) 215-7448 Fax: (847) 215-7449 E-mail: sales@mtusa.net