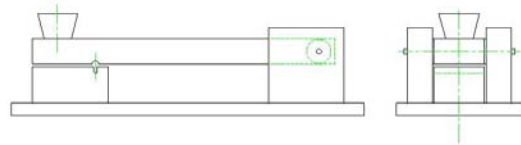


Standards:  
D1593 - 19  
D1790 - 21

Material Type:  
PLASTIC, FILM, VINYL

Type of Testing:  
IMPACTER

## DROP ARM IMPACTER FOR RIGID VINYL AT LOW-TEMPERATURES



<u>Model No.</u>	<u>Specimen Size or Difference Between Fixtures</u>	<u>Construction</u>	<u>Temperature</u>
ASTM.D1593.11	See below	Cold rolled steel and rubber	-120 to 250° (-85 to 122°C)
ASTM.D1790.10	See below	Cold rolled steel and rubber	-120 to 250° (-85 to 122°C)

Specimen:	Width	2" (50.8mm)
	Thickness	0.003" to 0.010" (0.075 to 0.25mm)
	Length	5.75" (146mm)
Fixture:	Mounting	Bench top
	Capacity	100 lbs
	Weight	25 lbs approximately
	Dimensions	14" x 5" x 4" approximately
Standard	Manufactured in compliance with ASTM D1593 and D1790	

## **QUOTE**

Model No. ASTM.D1593.11 - Drop Arm Impacter for Rigid Vinyl At Low-Temperatures

The Impacter accommodates specimens 2" x 5.75" (50.8mm x 146.1mm) looped and stapled with index card stock. Includes chrome plated base, anvil, arm, arm supports, shaft, plus rubber stopper and all hardware necessary. Impacter is manufactured of rubber and cold rolled steel with chrome plating in compliance with ASTM D1593 and D1790.

## **ACCESSORIES**

Model No. ACC.DIE00.0001 - Manually Operated Toggle Press

3,000 lb Capacity Die Press Fixture. Bench top press fixture for stamping out specimens using ASTM dies. This Manually Operated Toggle Press is ideal for singulation of small PCB's and all types of small die cutting. The press can handle dies with approximately five inches of trim. (Must order shank for each die size to use with toggle press)

Model No. ACC.DIE00.0002 - Mallet Anvil for ASTM Die

Model No. ACC.D1593.0001 - Shank for ASTM D1593 Specimen Die to Use with Toggle Press

Model No. ACC.D1790.0001 - Shank for ASTM D1790 Specimen Die to Use with Toggle Press

Model No. DIE.D1593.1101 - Die Geometry 100mm by 100mm Squared for ASTM D1593

Model No. DIE.D1790.1001 - Die Geometry 2" by 5" Long Rectangular for ASTM D1790

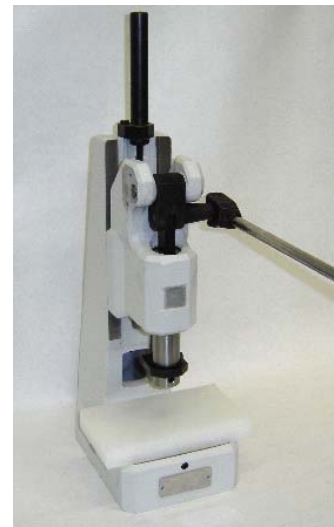
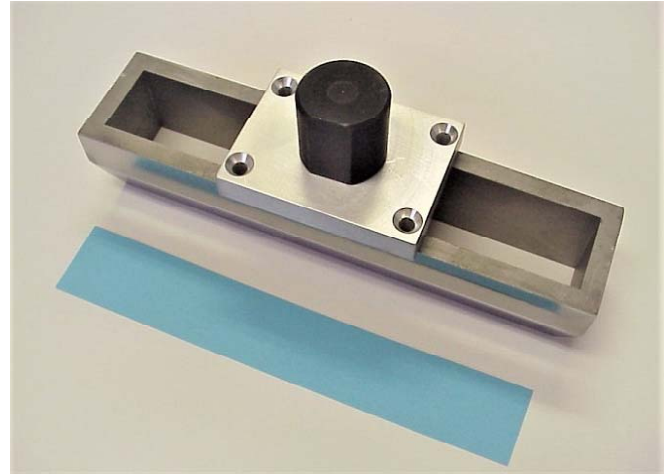
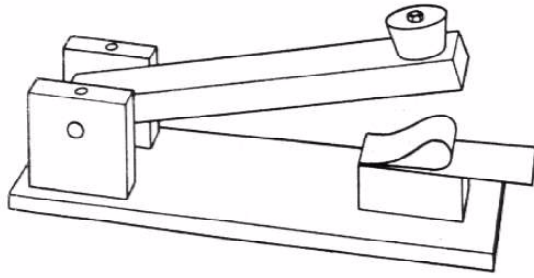
**SPARE PARTS**

Model No. SPA.D1593.1101 - Replacement Rubber Stopper

**COMMON SIZE ADAPTERS**

No adapters needed for this fixture

**EXTRA PHOTOS:**



**3,000 lb. Lever Action Die Press**