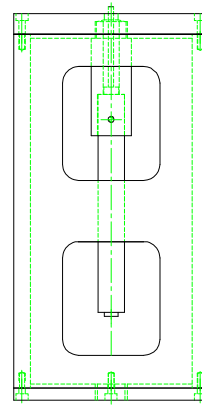


Standards:
ASTM C365 - 22
ASTM D7336 - 16
MIL-STD-401B - 67

Material Type:
CORES

Type of Testing:
FLATWISE, COMPRESSION

6" DIAMETER COMPRESSION PLATEN WITH 12" LONG SUPPORT CYLINDER FOR LVDT TESTING (LVDT NOT INCLUDED)



Model No.

ASTM.C0365.11
ASTM.D7336.11
MILS.00401.11

Specimen Size or Difference Between Fixtures

Up to 6" wide and any thickness
Up to 6" wide and any thickness
Up to 6" wide and any thickness

Construction

High strength steel with finish
High strength steel with finish
High strength steel with finish

Temperature

-120 to 250°F (-85 to 122°C)
-120 to 250°F (-85 to 122°C)
-120 to 250°F (-85 to 122°C)

Fixture:	Lower Platen	6" dia by 1/2" thick fixed mounted on top of cylinder
	Mounting	Upper: 1"-14 threaded coupling Lower: 1"-14 threaded coupling or platen
	Capacity	20,000 lbs (88.9 kN)
	Weight	50 lbs approximately
	Dimensions	7" x 7" x 18"
	Standard	Manufactured in compliance with ASTM C365, D7336 and MIL-STD-401B

QUOTE

Model No. ASTM.C0365.11 - Flatwise Compression Fixture for Sandwich Core Materials

The specimen is compressed between a 6" diameter articulating platen and a support cylinder platen assembly. The platen is a 6" diameter by 1/2" thick fixed platen with a centrally located clearance hole for the LVDT positioning sensor, and the 6" diameter by 12" long support cylinder with access holes located on the sides of the cylinder. The platen assembly is provided with an adjustable inner mounting ring for the LVDT (LVDT not included). The upper mounting for the 6" diameter articulating platen is 1"-14 threaded coupling and for lower mounting, the support cylinder is provided with a 1"-14 threaded coupling or can be used with a platen (platen not included). Constructed from high strength, heat treated steel with chrome finish. Manufactured in compliance with ASTM C365, D7336 and MIL-STD-401B.

ACCESSORIES

Model No. ACC.C0365.1101 - 1.0" Displacement LVDT for 300°F

Model No. PLAT.RA061.10 - 6" Diameter Articulating Platen

Model No. ACC.C0365.1103 - Modified Adapter and Dial Gage Instead of LVDT

SPARE PARTS

Please contact us for spare or replacement parts

COMMON SIZE ADAPTERS

Upper and Lower Mounting: 1"-14 Threaded Coupling

Model No. M01S36 - 1/2" Male Clevis to 1"-14 Threaded Stud

Model No. M02S36 - 5/8" Male Clevis to 1"-14 Threaded Stud

Model No. M03S36 - 1.25" Male Clevis to 1"-14 Threaded Stud

Model No. M12S36 - 12mm Male Clevis to 1"-14 Threaded Stud

Model No. LN36 - 1"-14 Threaded Locking Nut with Knurled OD

EXTRA PHOTOS:

