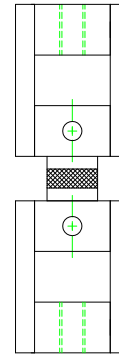


**Standards:**  
ASTM C297 - 16  
ASTM C481 - 99  
ASTM D1623 - 21 TYPE B & C  
MIL-STD-401B - 67

**Material Type:**  
ADHESIVE, SANDWICH

**Type of Testing:**  
TENSILE

## FLATWISE TENSION FIXTURE (SS) WITH 5 SETS OF 1" SQUARE (AL) BONDING BLOCKS - UNIVERSAL JOINT TYPE



**Model No.**

ASTM.C0297.10  
ASTM.C0481.20  
ASTM.D1623.20  
MILS.00401.50

**Specimen Size or Difference Between Fixtures**

1" Width and 1" Length  
1" Width and 1" Length  
1" Width and 1" Length  
1" Width and 1" Length

**Construction**

Stainless steel and aluminium  
Stainless steel and aluminium  
Stainless steel and aluminium  
Stainless steel and aluminium

**Temperature**

-120 to 250°F (-85 to 122°C)  
-120 to 250°F (-85 to 122°C)  
-120 to 250°F (-85 to 122°C)  
-120 to 250°F (-85 to 122°C)

Fixture:	Mounting	(2) 1/2"-20 threaded couplings
	Capacity	2,000 lbs (8.9 kN)
	Weight	11 lbs approximately
	Dimensions	Assembled 2" x 2" x 7"
	Bonding	Supplied with 5 sets of aluminum bonding blocks
	Standard	Manufactured in compliance with ASTM C297, C481, D1623 and MIL-STD-401B

## **QUOTE**

Model No. ASTM.C0297.10 - Flatwise Tension Fixture with 5 Sets of 1" Square Blocks

The five sets of bonding blocks are constructed from aluminum with a protective black anodized coating. Supplied with (2) 1/2"-20 threaded couplings. Universal joint type fixture constructed from stainless steel. Manufactured in compliance with ASTM C297, C481, D1623 and MIL-STD-401B.

## **ACCESSORIES**

Model No. ACC.C0297.1002 - Set of (2) 1" Square High Strength Steel with Black Oxide Blocks

Model No. ACC.C0297.1003 - Set of (2) 1" Square Stainless Steel Bonding Blocks

Model No. ACC.C0297.1004 - Set of (2) Metric Version Square Aluminum Bonding Blocks

Model No. ACC.C0297.1005 - Set of (2) Metric Version Square Stainless Steel Bonding Blocks

## **SPARE PARTS**

Model No. SPA.C0297.1001 - Extra swivel

Model No. SPA.C0297.1002 - Set of (2) 1" Square Aluminum Bonding Blocks

## **COMMON SIZE ADAPTERS**

### **Upper and Lower Mounting: 1/2"-20 Female Coupling**

Model No. M03S21 - 1.25" Male Clevis to 1/2"-20 Threaded Stud

Model No. S42S21 - 1.25"-12 to 1/2"-20 Threaded Step Stud

Model No. S48S21 - 1.5"-12 to 1/2"-20 Threaded Step Stud

Model No. S60S21 - 2"-12 to 1/2"-20 Threaded Step Stud

Model No. LN21 - 1/2"-20 Threaded Locking Nut with Knurled OD