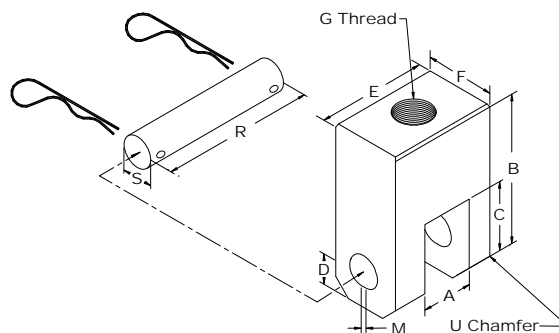


## COMPACT TENSION LOADING CLEVIS SET - 3 MATERIALS AVAILABLE



Specimen:	Width	0.4" to 4"
	Length	Any
	Thickness	0.4" - 8"
	Pin Shape	D-shape or square
Fixture:	Construction	Available in 3 materials:
	Temperature	17-4 PH      -240 to 600°F (-152 to 318°C) Maraging 300   -240 to 600°F (-152 to 318°C) Inconel 718    Up to 1800°F
	Mounting	Threaded couplings - see chart
	Dimensions	See chart
	Standard	Manufactured in accordance with ASTM E1820

Model No. ASTM.E1820.XX - Compact Tension Loading Clevis Set (3 Materials Available)

(B) Specimen Width =  
(W) Specimen Length =  
Loading Pin Diameter =  
Clevis Thread Size =  
Pin Hole Shaped =

Precision machined compact tension loading clevis set of (2) with loading pins and retaining hairpins. Each clevis is supplied with a female thread for attachment with a fatigue rated loading stud. Each clevis is constructed of high strength steel (available in 3 different materials) in accordance with ASTM E1820.

# MODEL NO. ASTM.E1820.XX

## FRACTURE, TESTING, LINEAR-ELASTIC,

Model No.	Material Selection			Specimen Size		Compact Tension Clevis Dimensions						
	Material Code			Thickness (Inches)	Length (Inches)	(A) Slot	(B) Height	(C) Slot Depth	(E) Width	(G) Thread	(M) Hole Flat	(S) Pin Diameter
Stainless 17-4 PH	Inconel 718	Maraging 300										
ASTM.E1820	.01	.21	.41	0.40"	0.8"	0.412	2	0.608	0.80(1.25)	3/4"-10	0.040	0.192
ASTM.E1820	.02	.22	.42	½"	1.0"	0.515	2	0.76	1.00(1.25)	3/4"-10	0.050	0.240
ASTM.E1820	.03	.23	.43	0.60"	1.2"	0.618	2.5	0.912	1.20(1.25)	3/4"-10	0.060	0.288
ASTM.E1820	.04	.24	.44	¾"	1.5"	0.773	2.5	1.14	1.50	3/4"-10	0.075	0.360
ASTM.E1820	.05	.25	.45	0.8"	1.6"	0.824	3	1.216	1.60	3/4"-10	0.080	0.384
ASTM.E1820	.06	.26	.46	1.00"	2.0"	1.030	3	1.52	2.00	3/4"-10	0.100	0.480
ASTM.E1820	.07	.27	.47	1.25"	2.5"	1.288	3.5	1.9	2.50	3/4"-10	0.125	0.600
ASTM.E1820	.08	.28	.48	1.50"	3.0"	1.545	4	2.28	3.00	1"-8	0.150	0.720
ASTM.E1820	.09	.29	.49	1.75"	3.5"	1.803	4.5	2.66	3.50	1"-8	0.175	0.840
ASTM.E1820	.09S	.29S	.49S	1.875"	3.75"	1.931	5	2.85	3.75	1"-8	0.188	0.900
ASTM.E1820	.10	.30	.60	2.00"	4.0"	2.060	5	3.04	4.00	1"-8	0.200	0.960
ASTM.E1820	.11	.31	.61	2.25"	4.5"	2.318	5.5	3.42	4.50	1.25-7	0.225	1.080
ASTM.E1820	.12	.32	.62	2.50"	5.0"	2.575	6.25	3.8	5.00	1.25-7	0.250	1.200
ASTM.E1820	.13	.33	.63	3.00"	6.0"	3.090	7	4.56	6.00	1.25-7	0.300	1.440
ASTM.E1820	.14	.34	.64	3.50"	7.0"	3.605	8	5.32	7.00	1.5-6	0.350	1.680
ASTM.E1820	.15	.35	.65	4.00"	8.0"	4.120	9	6.08	8.00	1.5-6	0.400	1.920

MTT '18 rev. A,

\*\*\* Note: To order, combine the Model No. code together with the material code number to create the part number. Example: ½" Specimen Thickness made from 17-4PH stainless steel (Model No "ASTM.E1820" with ".02") - Order No. ASTM.E1820.02. Some common sizes are in stock, all other items are two to four weeks delivery upon receipt of purchase order. Other sizes quoted on request. Items are shipped UPS ground unless otherwise specified. Terms are net 30 days.

### ACCESSORIES

Model No. SPA.E1820.XX01 - Extra set of (2) (S) diameter loading pins and (4) retaining hairpin clips.

#### Upper and lower fixture attachment is supplied with a threaded coupling. (Common adapter sizes include:)

Model No. M03SXX - 1.25" Male Clevis (Type D) to (G) Threaded Stud

Model No. S42SXX - 1.25" -12 to (G) Threaded Step Stud

Model No. S36CXXA - 1" -14 to (G) Threaded Reducer

Model No. SXXXXXX - (G) Threaded Stud

Model No. LNXX - (G) Threaded Locking Nut with Knurled OD

Material Testing Technology

420 Harvester Court - Wheeling, IL. 60090 - Ph: (847) 215-7448 Fax: (847) 215-7449 E-mail: sales@mttusa.net