

TEAR RESISTANT DIES FOR SHAPE A - C



<u>Model No.</u>	<u>Specimen Size or Difference Between Fixtures</u>	<u>Construction</u>	<u>Temperature</u>
DIE.D0624.0001	1.65" Gauge Length, 0.4" Gauge Width		
DIE.D0624.0002	2.7" Gauge Length, 0.4" Gauge Width		
DIE.D0624.0003	2.7" Gauge Length, 0.4" Gauge Width		
DIE.PST39.0003	2.7" Gauge Length, 0.4" Gauge Width		
DIE.D0624.0004	2.12" Gauge Length, 0.5" Gauge Width		

Fixture:	Weight	2 lbs
	Dimensions	See quote below
	Standard	Manufactured in compliance with ASTM D624 and PSTC 39

QUOTE

Model No. DIE.D0624.0001 - Tear Resistant Shape "A" Die

The die dimensions are 1.65" gauge length, 0.4" gauge width. Certificate of Compliance supplied for Die

Model No. DIE.D0624.0002 - Tear Resistant Shape "B" Die

The die dimensions are 2.7" gauge length, 0.4" gauge width. Certificate of Compliance supplied for Die

Model No. DIE.D0624.0003 - Tear Resistant Shape "B with Chisel" Die

The die dimensions are 2.7" gauge length, 0.4" gauge width. Certificate of Compliance supplied for Die

Model No. DIE.D0624.0004 - Tear Resistant Shape "C" Die

The die dimensions are 2.12" gauge length, 0.5" gauge width. Certificate of Compliance supplied for Die

ACCESSORIES

Model No. ACC.DIE00.0001 - Manually Operated Toggle Press

3,000 lb Capacity Die Press Fixture. Bench top press fixture for stamping out specimens using ASTM dies. This Manually Operated Toggle Press is ideal for singulation of small PCB's and all types of small die cutting. The press can handle dies with approximately five inches of trim. (Must order shank for each die size to use with toggle press)

Model No. ACC.DIE00.0002 - Mallet Anvil for ASTM Die

Model No. ACC.D0624.0001 - Shank for Gemoetry "A" Die to Use with Toggle Press

Model No. ACC.D0624.0002 - Shank for Gemoetry "B" Die to Use with Toggle Press

Model No. ACC.D0624.0003 - Shank for Gemoetry "B with Chisel" Die to Use with Toggle Press

Model No. ACC.D0624.0004 - Shank for Gemoetry "C" Die to Use with Toggle Press

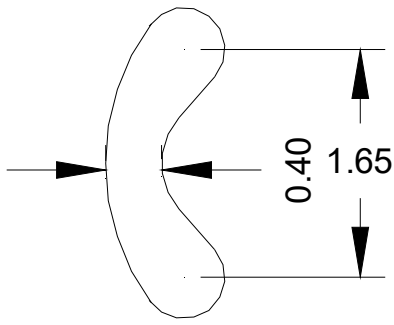
SPARE PARTS

Please contact us for spare or replacement parts

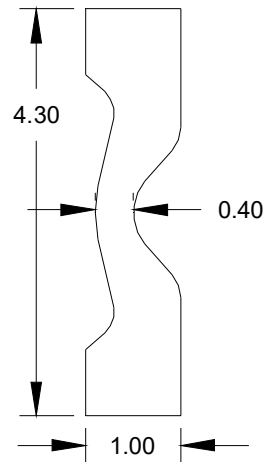
COMMON SIZE ADAPTERS

No adapters needed for this fixture

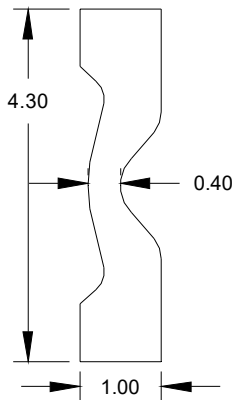
EXTRA PHOTOS:



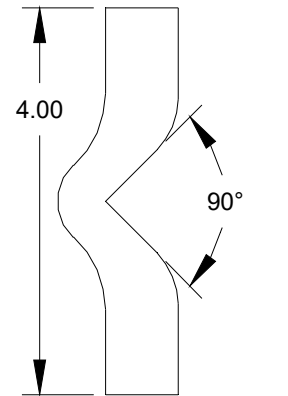
D0624.000A
Die A



D0624.000B
Die B



D0624.0B/C
Die B
w/Chisel



D0624.000C
Die C