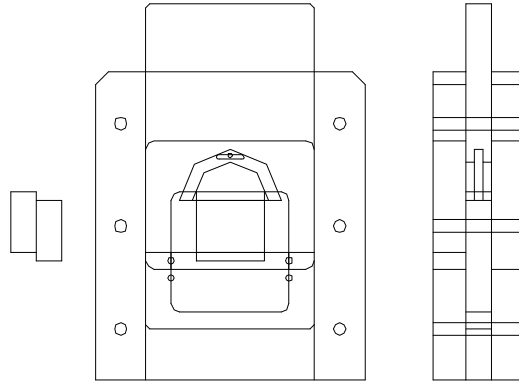
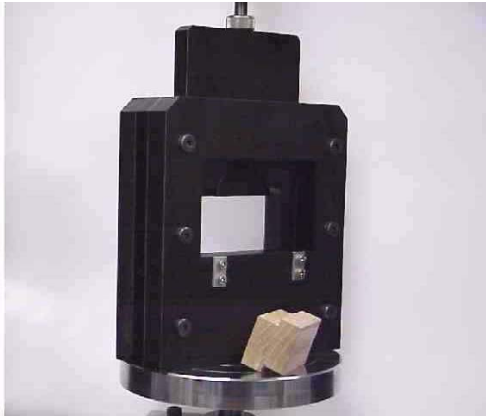


## COMPRESSION LOADING SHEAR FIXTURE WITH SELF-ALIGNING BEARING (CS)



Specimen:	Width	Up to 2.0"
	Thickness	Up to 2.5"
	Length	Up to 2.0"
Fixture:	Construction	High strength steel with protective black oxide
	Temperature	-120 to 250°F (-85 to 122°C)
	Mounting	Top: 1/2"-20
		Bottom: platen (platen not included)
	Capacity	15,000 lbs (67kN)
	Weight	60 lbs approximately
	Dimensions	Assembled 12" x 5" x 10"
	Standard	Manufactured in accordance with ASTM D143, D905, D2559, D3931 & D5751

Model No. ASTM.D5751.10 - Shear Parallel to Grain Test Fixture. 15,000 pound capacity compression loading fixture that applies a shear load to a bonded wooden sample. The loading anvil has a self-alignment seat that allows uniform lateral distribution of load. 1/2"-20 thread adaption supplied in loading plate. The base sits on a platen (platen not included). The fixture is constructed of high strength steel in accordance with ASTM D143, D905, D2559, D3931 & D5751.

# **MODEL NO. ASTM.D5751.10**

## **ASTM, GAP, FILLING, ADHESIVE, BOND, SHEAR,**

### **ACCESSORIES**

#### **Upper fixture attachment is supplied with 1/2"-20 female coupling. (Common adapter sizes include:)**

Model No. M01S21 - 1/2" Male Clevis (Type B) to 1/2" -20 Threaded Stud Adapter  
Model No. M02S21 - 5/8" Male Clevis to (Type C) 1/2" -20 Threaded Stud Adapter  
Model No. M03S21 - 1.25" Male Clevis (Type D) to 1/2" -20 Threaded Stud Adapter  
Model No. M12S21 - 12mm Male Clevis (Type O) to 1/2" -20 Threaded Stud Adapter  
Model No. S36S21 - 1" -14 to 1/2" -20 Threaded Step Stud  
Model No. LN21 - 1/2" -20 Threaded Locking Nut with Knurled OD

#### **Lower fixture attachment is supported on a platen or flat surface of the test machine. (Common adapter sizes include:)**

Model No. PLAT.RF061.10 - 6" Diameter Round Fixed Compression Platen  
Model No. PLAT.RA061.10 - 6" Diameter Round Articulating Compression Platen  
Model No. PLAT.SF061.10 - 6" Square Fixed Compression Platen  
Model No. PLAT.SA061.10 - 6" Square Articulating Compression Platen  
Model No. M03S36 - 1.25" Male Clevis to 1" -14 Threaded Stud Adapter

### **SPARE PARTS**

Contact us for spare or replacement parts

### **REFERENCE DOCUMENT AND TEST METHOD SCOPE:**

<http://www.astm.org/Standards/D5751.htm>

ASTM D5751-99(2012)

Standard Specification for Adhesives Used for Laminate Joints in Nonstructural Lumber Products

1.1 This specification covers performance levels for adhesives to be used in laminate joints in nonstructural lumber products. Such products include, but are not limited to, interior and exterior mouldings, window and door components or parts, and bonded lumber panels. This specification is to be used to evaluate adhesives as well as the adhesive bonds in nonstructural-glued-lumber products. Note 1—This specification supersedes the laminate-joint portion of Specification D3110. Note 2—See 3.2.1 and 3.2.2 for descriptions of a dry-use-nonstructural adhesive and a wet-use-nonstructural adhesive. 1.2 This specification applies to laminate-joint specimens made under both laboratory and field conditions. See Section 4 for limitations in using this specification to evaluate industrially manufactured laminate joint products. 1.3 The following safety caveat applies only to the apparatus and test methods portions, Sections 6, 7, 8, and 9 of this specification: This standard does not purport to address all of the safety concerns, if any, associated with its use. It is the responsibility of the user of this standard to establish appropriate safety and health practices and determine the applicability of regulatory limitations prior to use. 1.4 The values stated in inch-pound units are to be regarded as standard. 1.5 In this specification, laminate joint refers to both face and edge joints. 1.6 The following index is provided as a guide to the test methods in this specification:(Section)Apparatus (6)Conditioning (7)Material and Preparation of Assemblies and Specimens (8)Exposure Conditions and Treatments (9)Testing, Calculation, and Reporting(10)Note 3—The conditioning needed for various stages in the preparation of the specimens and for the exposure tests are given in Sections 7, 8, and 9.

Extracted, with permission, from ASTM D5751 Standard Specification for Adhesives Used for Laminate Joints in Nonstructural Lumber Products, copyright ASTM International, 100 Barr Harbor Drive, West Conshohocken, PA 19428. A copy of the complete standard may be purchased from ASTM International, [www.astm.org](http://www.astm.org).