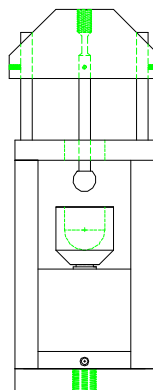


BURST STRENGTH TEST FIXTURE (AL)



Specimen:	Width	4" X 4" square (2" diameter clamp)	
	Thickness	Up to 0.15"	
Fixture:	Probe	1.0" diameter stainless steel ball	
	Clamping	1,000 lbf pneumatic loading piston	
	Construction	Aluminum with protective finish and stainless steel	
	Temperature	-20°F to 120°F (-29 to 49°C)	
	Mounting	Top	5/8"-18 stud
		Bottom	1"-14 coupling
	Capacity	500 lbs	
	Weight	20 lbs approximately	
	Dimensions	Assembled - 6" x 6" x 20"	
	Standard	Manufactured in accordance with ASTM D3787 & D5378	

Model No. ASTM.D5378.30 - Burst Strength Fixture for Knitted or Woven Shower Curtains for Institutional Use
The fixture consists of: 1.0" diameter polished ball supported on a 6.0" long loading rod, which is attached to the upper platen of the upper portion of the fixture. The upper adapter is a 5/8" -18 threaded stud. The lower portion of the fixture has a 1.750" internal diameter specimen clamping support and ring. The loading ring is pressed against the knitted goods with a pneumatic cylinder. The lower adapter is a 1" -14 threaded coupling. Fixture capacity 500 lbs. Constructed of aluminum with protective finish and stainless steel in accordance with ASTM D5378.

MODEL NO. ASTM.D5378.30

ASTM, KNITTED, WOVEN, SHOWER, CURTAIN,

ACCESSORIES

Upper fixture attachment is supplied with 5/8" -18 female coupling (Common adapter sizes include:

Model No. M01S27 - 1/2" Male Clevis (Type B) to 5/8" -18 Threaded Stud
Model No. M02S27 - 5/8" Male Clevis (Type C) to 5/8" -18 Threaded Stud
Model No. M03S27 - 1.25" Male Clevis (Type D) to 5/8" -18 Threaded Stud
Model No. M12S27 - 12mm Male Clevis to 5/8" -18 Threaded Stud Adapter
Model No. S36S27 - 1" -14 to 5/8" -18 Threaded Step Stud
Model No. LN27 - 5/8" -18 Threaded Locking Nut with Knurled OD

Lower fixture attachment is supplied with 1" -14 female coupling. (Common adapter sizes include:)

Model No. M03S36 - 1.25" Male Clevis (Type D) to 1" -14 Threaded Stud
Model No. S42S36 - 1.25" -12 to 1" -14 Threaded Step Stud
Model No. S48S36 - 1.5" -12 to 1" -14 Threaded Step Stud
Model No. S60S36 - 2" -12 to 1" -14 Threaded Step Stud
Model No. LN36 - 1" -14 Threaded Locking Nut with Knurled OD

SPARE PARTS

SPA.D5378.3001 - Extra 1" Diameter Ball

REFERENCE DOCUMENT AND TEST METHOD SCOPE:

<http://www.astm.org/Standards/D5378.htm>

ASTM D5378-12

Standard performance Specification for Woven and Knitted Shower Curtains for Institutional and Household Use

1.1 This specification covers the evaluation of specific performance characteristics of importance in woven and knitted shower curtains for use in institutional and household environments. 1.2 This specification may be used by mutual agreement between purchaser and supplier to establish purchasing specification requirements. 1.3 The requirements in Table 1 apply to the length and width directions for those properties where fabric direction is pertinent. 1.4 This specification is not applicable for coated, laminated or vinyl product. 1.5 This standard does not purport to address all of the safety concerns, if any, associated with its use. It is the responsibility of the user of this standard to establish appropriate safety and health practices and determine the applicability of regulatory limitations prior to use. TABLE 1 Specification requirements Note—Grade in a, b, and c, is based on a numerical scale of 5 for negligible or no color change or color transfer to 1 for severe color change or color transfer. Characteristic: Requirement (Section). Breaking Force (Load) (CRT)/ Dry: 178 N (40 lbf), minimum (7.1.1), Wet: 89 N (20 lbf), minimum (7.1.1), Bursting Force (Knit Fabrics): 178 N (40 lbf), minimum (7.1.2), Dimensional Change (L × W): 3.0 % maximum (7.1.3), Skew: 4.0 % maximum (7.1.4), Colorfastness/ Laundering (7.1.5.1), Shade change: Grade 4A minimum, Stain: Grade 3B minimum, Crocking (7.1.5.2), Dry: Grade 4C minimum, Wet: Grade 4C minimum, Light (20 AATCC AFU) (xenon arc): Grade 4A minimum (7.1.5.3), Water Resistance (7.1.6), Categories based on minimum time for/ 1-g weight, 2 ft (600 mm): 2 min rain, 3 ft (915 mm): 5 min storm, Appearance Retention: Satisfactory (7.2.1). *A AATCC Gray Scale for Color Change. *B AATCC Gray Scale for Staining. *C AATCC 9-Step Chromatic Transference Scale. Extracted, with permission, from ASTM D5378 Standard performance Specification for Woven and Knitted Shower Curtains for Institutional and Household Use, copyright ASTM International, 100 Barr Harbor Drive, West Conshohocken, PA 19428. A copy of the complete standard may be purchased from ASTM International, www.astm.org.