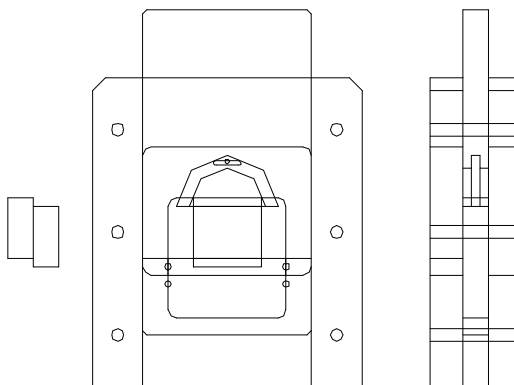


COMPRESSION LOADING SHEAR FIXTURE WITH SELF-ADJUSTING BEARING (CS)



Specimen:	Holding Block	1.25"
	Thickness	5/16"
	Length	1.25"

Fixture:	Construction	High strength steel with protective black oxide
	Temperature	-120 to 250°F (-85 to 122°C)
	Mounting	Top: 1/2" -20 threaded coupling
		Bottom: platen (platen not included)
	Capacity	15,000 lbs
	Weight	60 lbs approximately
	Dimensions	Assembled 8" x 2.75" x 11"
	Standard	Manufactured in accordance with ASTM D4502

Model No. ASTM.D4502.10 - Adhesive Bond Strength Shear Test Fixture. 15,000 pound capacity compression loading fixture that applies a shear load to a bonded wooden sample. The loading anvil has a self-alignment seat that allows uniform lateral distribution of load. The fixture has a 1/2"-20 threaded coupling adaption supplied in loading plate, while the base sits on a platen. The fixture is constructed in accordance with ASTM D143, D905, D2559, D3931, D4502 & D5751.

MODEL NO. ASTM.D4502.10

ASTM, HEAT, MOISTURE, SHEAR, WOOD,

ACCESSORIES

Upper fixture attachment is supplied with 1/2" -20 female coupling (Common adapter sizes include:)

Model No. M01S21 - 1/2" Male Clevis (Type B) to 1/2" -20 Threaded Stud
Model No. M02S21 - 5/8" Male Clevis (Type C) to 1/2" -20 Threaded Stud
Model No. M03S21 - 1.25" Male Clevis (Type D) to 1/2" -20 Threaded Stud
Model No. M12S21 - 12mm Male Clevis (Type O) to 1/2" -20 Threaded Stud
Model No. S36S21 - 1" -14 to 1/2" -20 Threaded Step Stud
Model No. LN21 - 1/2" -20 Threaded Locking Nut with Knurled OD

Lower fixture attachment is supported on a platen or flat surface of the test machine. (Common adapter sizes include:)

Model No. PLAT.RF061.10 - 6" Diameter Round Fixed Compression Platen
Model No. PLAT.RA061.10 - 6" Diameter Round Articulating Compression Platen
Model No. PLAT.SF061.10 - 6" Square Fixed Compression Platen
Model No. PLAT.SA061.10 - 6" Square Articulating Compression Platen
Model No. M03S36 - 1.25" Male Clevis (Type D) to 1" -14 Threaded Stud

SPARE PARTS

Contact us for spare or replacement parts

REFERENCE DOCUMENT AND TEST METHOD SCOPE:

<http://www.astm.org/Standards/D4502.htm>

ASTM D4502 - 92(2011)

Standard Test Method for Heat and Moisture Resistance of Wood-Adhesive Joints

1.1 The purpose of this test method is to estimate the resistance of adhesive-bonded joints to thermal and hydrolytic degradation.

1.2 This test method is primarily for wood-to-wood joints but may be applied to joints of wood to other materials.

1.3 The effects of chemicals such as fire retardants, preservatives, and extractives in the wood upon joint degradation resistance can be estimated.

1.4 This test method does not account for the effects of stress, the other principal degrading factor, nor does it account for cyclic or variable temperature or moisture levels.

1.5 This standard does not purport to address all of the safety concerns, if any, associated with its use. It is the responsibility of the user of this standard to establish appropriate safety and health practices and determine the applicability of regulatory limitations prior to use.

Extracted, with permission, from ASTM D4502 Standard Test Method for Heat and Moisture Resistance of Wood-Adhesive Joints, copyright ASTM International, 100 Barr Harbor Drive, West Conshohocken, PA 19482. A copy of the complete standard may be purchased from ASTM International, www.astm.org.