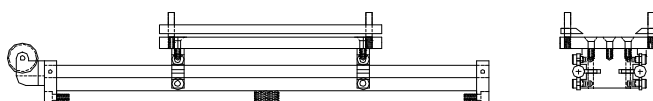
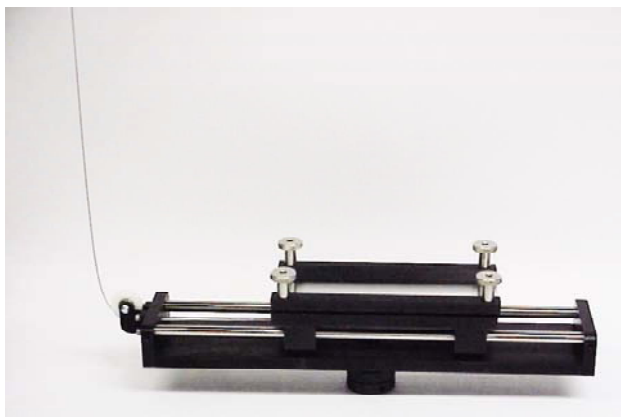


90° CONSTANT ANGLE PEEL FIXTURE



Specimen	Width	Up to 1.0"
	Thickness	Any thickness up to 0.500"
	Length	Up to 20"
Fixture	Construction	Aluminum & stainless steel
	Temperature	-20 to 120°F (-29 to 49°C)
	Mounting	1.25" Type D Male Clevis (top grip sold separately)
	Capacity	100 lbs
	Weight	10 lbs approximately
	Dimensions	Assembled 3" x 6" x 8"
	Standard	Manufactured in accordance with ASTM D2861.

Model No. ASTM.D2861.10 - 90° Constant Angle Peel Fixture

The fixture consists of a horizontal aluminum mounting plate with two specimen clamping bars held down by knurled nuts. The specimen plate moves along twin linear rails by four linear roller bearings. The rails are secured to the base of the test machine by an aluminum mounting bracket that has a 1" -14 threaded coupling. One end of the fixture supports a nylon wheel which is used to guide a thin vinyl coated steel wire. The steel wire is used for low force peel tests which require the sled to be driven by the cross head. The wire attaches to the sled and upper cross head. The fixture is also supplied with 5 Q-panel aluminum peel testing panels. Constructed in accordance with PSTC, ASTM B571, ASTM D2681 and ASTM D6862 standards. Fixture dimensions: Width = 4.25" (2.125" edge to centerline), Length = 18" Height = 5".

MODEL NO. ASTM.D2861.10

ASTM, COMPOSITE, MISC

ACCESSORIES

Model No. Grip.10100.201- (1) 200lbs Screw Action Grip with 1" Square Grip Faces

SPARE PARTS

Call for replacement or spare parts

REFERENCE DOCUMENT AND TEST METHOD SCOPE:

<http://www.astm.org/Standards/D2861.htm>

ASTMD2861-87(2004)

Standard Test Methods for Flexible Composites of Copper Foil with Dielectric Film or Treated Fabrics

1.1 These test methods cover procedures for testing flexible materials consisting of copper foil combined with either dielectric film or with treated or impregnated fabric to form flexible composites used in the manufacture of flexible or multilayer circuitry, or both.

1.2 The procedures appear as follows Procedure(Section)(ASTM Reference Method)

Conditioning(5)(-), Flex Life of the Composite(20-25)(-), Peel Strength of the Composite(11-19)(-), Specimen Preparation(6)(D1825), Strain Relief Due to Etching(26-32)(-), Testing of the Dielectric Portion of the Composite(7-10)(D1825,D2305,D902)

1.3 The values stated in inch-pound units are to be regarded as standard. The values given in parentheses are mathematical conversions to SI units that are provided for information only and are not considered standard.

1.4 This standard does not purport to address all of the safety concerns, if any, associated with its use. It is the responsibility of the user of this standard to establish appropriate safety and health practices and determine the applicability of regulatory limitations prior to use.

Extracted, with permission, from ASTM D2861 Standard Test Methods of Static Tests of Lumber in Structural Sizes, copyright ASTM International, 100 Barr Harbor Drive, West Conshohocken, PA 19482. A copy of the complete standard may be purchased from ASTM International, www.astm.org

Material Testing Technology

420 Harvester Court - Wheeling, IL. 60090 – Ph: (847) 215-7448 Fax: (847) 215-7449 E-mail: sales@mtusa.net