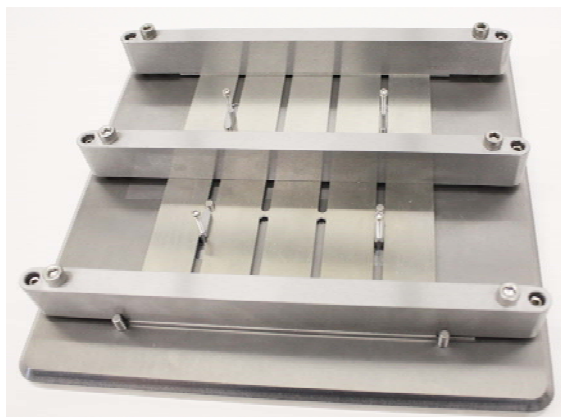
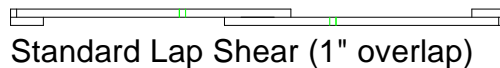


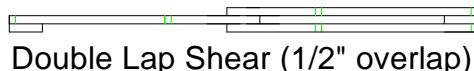
## METAL TO METAL LAP SHEAR SPECIMEN FABRICATION FIXTURE (SS)



Standard Lap Shear (1/2" overlap)



Standard Lap Shear (1" overlap)



Double Lap Shear (1/2" overlap)



Double Lap Shear (1" overlap)

Specimen	Width	1/2"
	Thickness	Up to 0.064"
	Length	7"
Fixture	Construction	Stainless steel
	Temperature	-240 to 600°F (-152 to 318°C)
	Mounting	Table top
	Capacity	Not applicable
	Weight	35 lbs approximately
	Dimensions	Assembled - 10" x 10" x 2"
	Standard	Manufactured in accordance with ASTM D1002

### Model No. ASTM.D1002.30 - Metal to Metal Lap Shear Specimen Fabrication Fixture

The fixture consists of a ground stainless steel tooling plate, removable lower profile panel positioning points for specimen panel alignment, and ground clamp bars with guide holes for positioning. Supplied with 12 sets of (2) 2024 Aluminum slotted specimen panels and 12 pieces of adhesive slip sheets. The fixture accommodates (2) 5.75" wide slotted lap shear tab material panel that is 0.064" (1.62mm) thick and overlaps 1/2". The fixture is constructed of stainless steel in accordance with ASTM D1002.

## **MODEL NO. ASTM.D1002.30**

### **ASTM - METAL - MISC**

#### **ACCESSORIES**

Model No. ACC.D1002.3001 - 100pcs of 6061 AL 1/2" Overlap Slotted Specimen Panels  
Model No. ACC.D1002.3002 - 100pcs of 7075 AL 1/2" Overlap Slotted Specimen Panels  
Model No. ACC.D1002.3003 - 100pcs of A36 Steel 1/2" Overlap Slotted Specimen Panels  
Model No. ACC.D1002.3004 - Pack of (24) Die-Cut Underlayment Mylar Film  
Model No. ACC.D1002.3006 - Pack of (25) Double Lap Shear Spacer Plates  
Model No. ACC.D1002.3050 - 100pcs of 2024 AL 1" Overlap Lap Shear Slotted Specimen  
Model No. ACC.D1002.3051 - 100pcs of 6061 AL 1" Overlap Lap Shear Slotted Specimen  
Model No. ACC.D1002.3052 - 100pcs of 7075 AL 1" Overlap Lap Shear Slotted Specimen  
Model No. ACC.D1002.3053 - 100pcs of A36 Steel 1" Overlap Lap Shear Slotted Specimen

#### **SPARE PARTS**

Model No. SPA.D1002.3001 - 100pcs of 2024 AL 1/2" Slotted Specimen Panels

#### **REFERENCE DOCUMENT AND TEST METHOD SCOPE:**

Scope <http://www.astm.org/Standards/D1002.htm>

ASTM D1002-10

Standard Test Method for Apparent Shear Strength of Single-Lap-Joint Adhesively Bonded Metal Specimens by Tension Loading (Metal-to-Metal)

1.1 This test method covers the determination of the apparent shear strengths of adhesives for bonding metals when tested on a standard single-lap-joint specimen and under specified conditions of preparation and test.

1.2 The values stated in SI units are considered to be the standard. The values given in parentheses are for information only.

1.3 This standard does not purport to address all of the safety concerns, if any, associated with its use. It is the responsibility of the user of this standard to establish appropriate safety and health practices and determine the applicability of regulatory limitations prior to use.

Extracted, with permission, from ASTM D1002 Standard Test Method for Apparent Shear Strength of Single-Lap-Joint Adhesively Bonded Metal Specimens by Tension Loading (Metal-to-Metal), 100 Barr Harbor Drive, West Conshohocken, PA 19482. A copy of the complete standard may be purchased from ASTM International, [www.astm.org](http://www.astm.org).