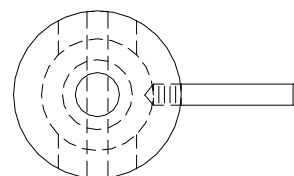
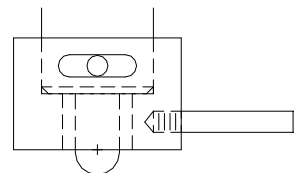


MODIFIED JANKA BALL HARDNESS TEST FIXTURE WITH DIAL GAUGE ATTACHMENT (11.3MM DIA. NOSE)



Specimen	Width	2.0" minimum
	Thickness	2.0" minimum
	Length	6.0" minimum
Fixture	Construction	High strength steel with protective black oxide
	Temperature	-120 to 250°F (-85 to 122°C)
	Mounting	5/8" -18 threaded coupling end and platen
	Capacity	2,000 lbs (8.9kN)
	Weight	12 lbs approximately
	Dimensions	Assembled - 2.5" x 2" x 8"
	Standard	Manufactured in accordance with ASTM D143

Model No. ASTM.D0143.80 - Modified Janka Ball Hardness Test Fixture With Dial Gauge Attachment

The hardness test device includes a hardened 0.444" (11.3mm) diameter loading penetrator and stop collar with removable handle. The device is supplied with a 5/8"-18 threaded coupling end and dial gauge. Fixture is constructed of high strength steel in accordance with ASTM D143 and D1037. Capacity 2,000 lbs (9kN).