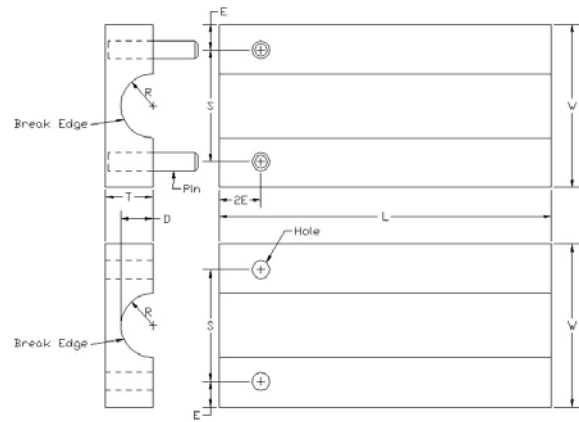


SPECIMEN CLAMPING PLATE SET



Model No.	Specimen Size or Difference Between Fixtures	Construction	Temperature
ASTM.D3916.10	0" to 1/4"	Aluminum with a protective finish	-20 to 120°F (-29 to 49°C)
ASTM.D3916.11	1/2" to 3/4"	Aluminum with a protective finish	-20 to 120°F (-29 to 49°C)
ASTM.D3916.12	7/8" to 1"	Aluminum with a protective finish	-20 to 120°F (-29 to 49°C)

Fixture:	Mounting	Grips (grips sold separately)
	Capacity	20,000 lbs (88.96 kN)
	Weight	8 lbs 12 lbs 20 lbs
	Dimensions	2" x 1" x 1/2" 6" x 2.25" x 1.5" 9" x 2.625" x 1.5"
	Standard	Manufactured in compliance with ASTM D3916

QUOTE

Model No. ASTM.D3916.10 - Specimen Clamping Plate Set

Each set of clamping plates consists of an upper and lower clamping pair. Each pair consists of mated left and right hand radiused cut outs that run the length of the clamping plates (2"). The cut outs accommodate 1 specimen size between 0 and 1/4" diameter. The clamping faces are sandblasted with 100 mesh carbide at 100 psi. Manufactured of aluminum with a protective finish in compliance with ASTM D3916. Please specify rod diameter when ordering

Model No. ASTM.D3916.11 - Specimen Clamping Plate Set

Each set of clamping plates consists of an upper and lower clamping pair. Each pair consists of mated left and right hand radiused cut outs that run the length of the clamping plates (6"). The cut outs accommodate 1 specimen size between 1/2" and 3/4" diameter. The clamping faces are sandblasted with 100 mesh carbide at 100 psi. Manufactured of aluminum with a protective finish in compliance with ASTM D3916. Please specify rod diameter when ordering.

Model No. ASTM.D3916.12 - Specimen Clamping Plate Set

Each set of clamping plates consists of an upper and lower clamping pair. Each pair consists of mated left and right hand radiused cut outs that run the length of the clamping plates (9"). The cut outs accommodate 1 specimen size between 7/8" and 1" diameter. The clamping faces are sandblasted with 100 mesh carbide at 100 psi. Manufactured of aluminum with a protective finish in compliance with ASTM D3916. Please specify rod diameter when ordering

ACCESSORIES

Model No. GRIP.10100.20 - 200 LBS Screw Action Grips with 1" Square Grip Faces

Grips come with 1/2"-20 threaded studs for mounting purposes.

SPARE PARTS

Please contact us for spare or replacement parts

COMMON SIZE ADAPTERS

Screw Action Grips Mounting: 1/2"-20 Stud and Locking Nut

Model No. M01C21 - 1/2" Male Clevis to 1/2"-20 Coupling

Model No. M02C21 - 5/8" Male Clevis to 1/2"-20 Coupling

Model No. M03C21 - 1.25" Male Clevis to 1/2"-20 Coupling

Model No. M12C21 - 12mm Male Clevis to 1/2"-20 Coupling

Model No. S36C21 - 1"-14 Stud to 1/2"-20 Coupling