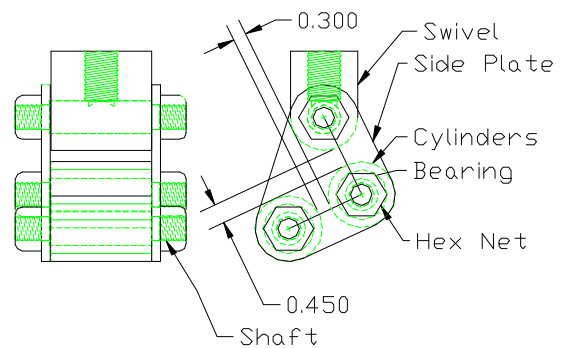


FLOATING ROLLER PEEL RESISTANCE FIXTURE



<u>Model No.</u>	<u>Specimen Size or Difference Between Fixtures</u>	<u>Construction</u>	<u>Temperature</u>
ASTM.D3167.10	1" wide, 1/4" thick and 10" long	Stainless steel	-120 to 250°F (-85 to 122°C)
ASTM.D3167.11	1.5" wide, 1/4" thick and 10" long	Stainless steel	-120 to 250°F (-85 to 122°C)
ASTM.D3167.12	6" wide, 1/4" thick and 10" long	Stainless steel	-120 to 250°F (-85 to 122°C)
ASTM.D3167.13	10" wide, 1/4" thick and 10" long	Stainless steel	-120 to 250°F (-85 to 122°C)
ISOS.04578.10	30mm wide, 2.1mm thick, 250mm long	Stainless steel	-120 to 250°F (-85 to 122°C)
ENST.02243.20	30mm wide, 2.1mm thick, 250mm long	Stainless steel	-120 to 250°F (-85 to 122°C)

Fixture:	Mounting	Top - (.10) (.11) (ISO) 1/2"-20 coupling, (.13) 3/4"-16 coupling Bottom - tensile grip (not included)
	Capacity	(.10) (.11) (ISO) 2,000 lbs, (.13) 5,000 lbs
	Weight	(.10) (.11) (ISO) 2 lbs approx., (.13) 28 lbs approx.
	Dimensions	(.10) (.11) (ISO) Assembled - 2" x 2" x 4", (.13) Assembled - 12" x 2.5" x 3"
	Standard	Manufactured in compliance with ASTM D3167, ISO 4578 and EN 2243-2

QUOTE

Model No. ASTM.D3167.10 - Up to 1" Wide Floating Roller Peel Resistance Fixture

The fixture will accommodate up to 1" wide test specimens. Comes with 1/2"-20 threaded coupling for upper mounting. Lower mounting requires a tensile grip that is not included. Fixture can handle 2,000 lbs capacity and weights approximately 2lbs. Constructed of stainless steel. Manufactured in compliance with ASTM D3167.

Model No. ASTM.D3167.11 - Up to 1.5" Wide Floating Roller Peel Resistance Fixture

The fixture will accommodate up to 1.5" wide test specimens. Comes with 1/2"-20 threaded coupling for upper mounting. Lower mounting requires a tensile grip that is not included. Fixture can handle 2,000 lbs capacity and weights approximately 2 lbs. Constructed of stainless steel. Manufactured in compliance with ASTM D3167.

Model No. ASTM.D3167.12 - Up to 6" Wide Floating Roller Peel Resistance Fixture

Roller Drum Peel Test Fixture with 1/2"-20 threaded adapter end. The fixture will accommodate up to 6" wide test specimens. Constructed of stainless steel. Manufactured in compliance with ASTM D3167.

Model No. ASTM.D3167.13 - Up to 10" Wide Floating Roller Peel Resistance Fixture

The fixture will accommodate up to 10" wide test specimens. Comes with 3/4"-16 threaded coupling for upper mounting. Lower mounting requires a tensile grip that is not included. Fixture can handle 5,000 lbs capacity and weights approximately 28 lbs. Constructed of stainless steel. Manufactured in compliance with ASTM D3167.

Model No. ISOS.04578.10 - Up to 30mm Wide Floating Roller Peel Resistance Fixture

The dual roller bearing type Roller Drum Peel Test Fixture is supplied with 1/2"-20 threaded coupling end. The fixture will accommodate up to 30mm wide test specimens with a 33mm peeling zone. Includes 25mm diameter rollers with bearings, side plates and all hardware necessary. Constructed of stainless steel. Manufactured in compliance with ISO 4578 and EN 2243-2.

ACCESSORIES

No accessories available for this fixture

SPARE PARTS

Please contact us for spare or replacement parts

COMMON SIZE ADAPTERS

Upper Mounting: 1/2"-20 Female Threaded Coupling

Model No. M01S21 - 1/2" Male Clevis (Type B) to 1/2" -20 Threaded Stud
Model No. M02S21 - 5/8" Male Clevis (Type C) to 1/2" -20 Threaded Stud
Model No. M03S21 - 1.25" Male Clevis (Type D) to 1/2" -20 Threaded Stud
Model No. M12S21 - 12mm Male Clevis (Type O) to 1/2" -20 Threaded Stud
Model No. S36S21 - 1" -14 to 1/2" -20 Threaded Step Stud
Model No. LN21 - 1/2" -20 Threaded Locking Nut with Knurled OD

Upper Mounting: 3/4"-16 Female Threaded Coupling

Model No. M01S30 - 1/2" Male Clevis (Type B) to 3/4" -16 Threaded Stud
Model No. M02S30 - 5/8" Male Clevis (Type C) to 3/4" -16 Threaded Stud
Model No. M03S30 - 1.25" Male Clevis (Type D) to 3/4" -16 Threaded Stud
Model No. M12S30 - 12mm Male Clevis to 3/4" -16 Threaded Stud
Model No. S36S30 - 1" -14 to 3/4" -16 Threaded Step Stud
Model No. LN30 - 3/4" -16 Threaded Locking Nut with Knurled OD

Material Testing Technology

420 Harvester Court - Wheeling, IL. 60090 - Ph: (847) 215-7448 Fax: (847) 215-7449 E-mail: sales@mtusa.net

EXTRA PHOTOS:

